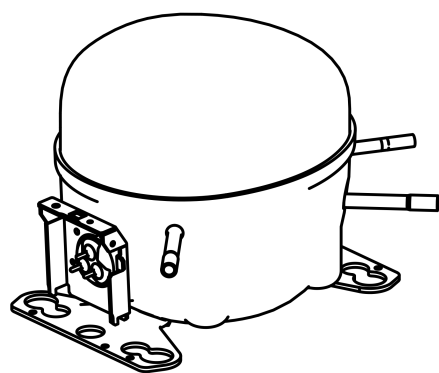


EMT6170Z



ENGINEERING CODE
513300086

REFRIGERANT
R-134a

POWER SUPPLY
100 V 50-60 Hz

APPLICATION
HBP

MOTOR TYPE
CSCR

STANDARD
ASHRAE

COOLING CAPACITY
802 W

EFFICIENCY
2.62 W/W



DATA

GENERAL DATA

Model	EMT6170Z
Type	Hermetic Reciprocating
Technology	ON/OFF
Compressor Application	HBP
Expansion Device	Capillary Tube or Expansion Valve
Compressor Cooling	Fan/100
HP	1
Starting Torque	HST
Plant	CHINA

ELECTRICAL DATA

Start Winding Resistance	6.42 Ω at 25°C
Run Winding Resistance	3.18 Ω at 25°C

MECHANICAL DATA

Displacement	7.96 cm ³
Oil Charge	180 ml
Oil Type	ESTER
Oil Viscosity	ISO22
Weight	8.2 Kg

ELECTRICAL COMPONENTS

Start Capacitor	88-108 µf/165 V
Run Capacitor	20.0 µf/250 V
CSR CSIR BOX	No
Starting Device Type	PTC
Starting Device Description	8EA14B11
Overload Protection	5TM444NFBYY-53

PERFORMANCE

TESTED CONDITIONS

Tested Refrigerant	R-134a
Tested Application	HBP
Tested Standard	ASHRAE
Tested Cooling	Fan
Tested Voltage	100 V
Max Refrigerant Charge	250 g
Refrigerant Temperature	Dew

Performance on Compressor Speed: 3000 RPM

RATED POINTS

Condensing Temperature °C	Evaporating Temperature °C	Cooling Capacity W	Efficiency W/W	Power Consumption W	Current A	Gas Flow Rate kg/h
54.4	7.2	802	2.62	307	3.38	17.74

Test Condition: Subcooling 8.3 K, Return Gas 35 °C. Data generated in accordance to EN 12900:2013 polynomial equation and tolerance guidelines.

PERFORMANCE CURVE

Condensing Temperature 45°C

Evaporating Temperature °C	Cooling Capacity W	Efficiency W/W	Power Consumption W	Current A	Gas Flow Rate kg/h
-15	383	2.05	187	2.47	7.64
-10	482	2.34	206	2.61	9.64
-5	600	2.65	226	2.75	12.05
0	736	3.00	246	2.90	14.87
5	891	3.39	263	3.07	18.09
10	1062	3.85	275	3.27	21.70

Test Condition: Subcooling 8.3 K, Return Gas 35 °C. Data generated in accordance to EN 12900:2013 polynomial equation and tolerance guidelines.

PERFORMANCE CURVE

Condensing Temperature 55°C

Evaporating Temperature °C	Cooling Capacity W	Efficiency W/W	Power Consumption W	Current A	Gas Flow Rate kg/h
-10	384	1.75	220	2.70	8.38
-5	482	1.98	244	2.88	10.57
0	597	2.21	271	3.07	13.16
5	729	2.45	297	3.29	16.16
10	876	2.72	322	3.53	19.57

Test Condition: Subcooling 8.3 K, Return Gas 35 °C. Data generated in accordance to EN 12900:2013 polynomial equation and tolerance guidelines.

Performance on Compressor Speed: 3600 RPM

RATED POINTS

Condensing Temperature °C	Evaporating Temperature °C	Cooling Capacity W	Efficiency W/W	Power Consumption W	Current A	Gas Flow Rate kg/h
54.4	7.2	882	2.48	356	3.69	19.51

Test Condition: Subcooling 8.3 K, Return Gas 35 °C. Data generated in accordance to EN 12900:2013 polynomial equation and tolerance guidelines.

PERFORMANCE CURVE

Condensing Temperature 45°C

Evaporating Temperature °C	Cooling Capacity W	Efficiency W/W	Power Consumption W	Current A	Gas Flow Rate kg/h
-15	418	2.16	193	2.03	8.34
-10	524	2.39	219	2.28	10.47
-5	668	2.67	250	2.56	13.42
0	845	2.99	282	2.87	17.06
5	1047	3.37	310	3.22	21.27
10	1269	3.84	330	3.64	25.92

Test Condition: Subcooling 8.3 K, Return Gas 35 °C. Data generated in accordance to EN 12900:2013 polynomial equation and tolerance guidelines.

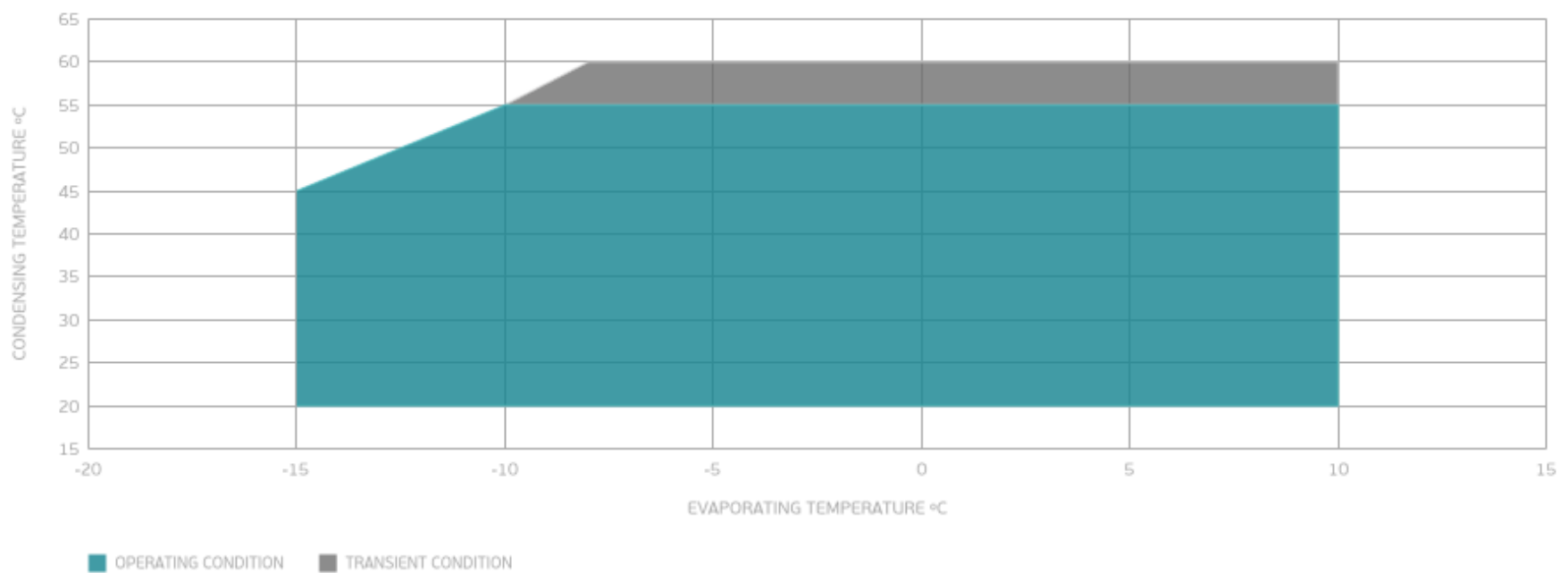
PERFORMANCE CURVE

Condensing Temperature 55°C

Evaporating Temperature °C	Cooling Capacity W	Efficiency W/W	Power Consumption W	Current A	Gas Flow Rate kg/h
-10	417	1.78	234	2.44	9.10
-5	519	1.95	266	2.75	11.38
0	647	2.13	303	3.10	14.27
5	795	2.33	341	3.50	17.64
10	957	2.55	375	3.97	21.36

Test Condition: Subcooling 8.3 K, Return Gas 35 °C. Data generated in accordance to EN 12900:2013 polynomial equation and tolerance guidelines.

ENVELOPE



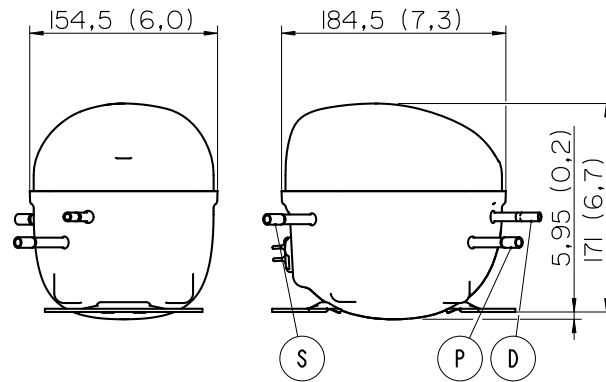
External

EXTERNAL CHARACTERISTICS

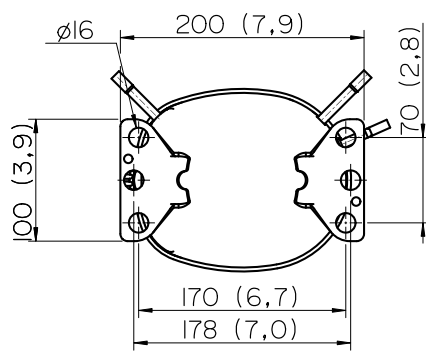
Base Plate	SMALL EUEM		
Tray Holder	NO		
Connector	Internal Diameter	Shape	Material
Suction	6.2 mm	SLANTED 40° UP + 45° TO BACK	COPPER
Discharge	4.9 mm	SLANTED 0° UP + 24° TO BACK	COPPER
Process	6.2 mm	SLANTED 40° UP + 45° TO BACK	COPPER

EXTERNAL DIMENSIONS

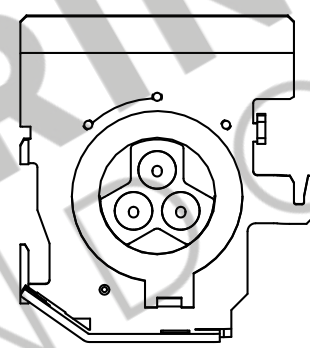
SHELL



BASE



FENCE



Telpon : (021) 80627021 , (021) 55787961
 WhatsApp : 085722 611 888 (Chat Only)
 Email : sales@polarin.co.id

PT. POLARIN XININDO

Pergudangan Duta Niaga No. 9BL/BK
 Jl. Halim Perdana Kusuma
 Jurumudi Baru, Benda - Tangerang 15124